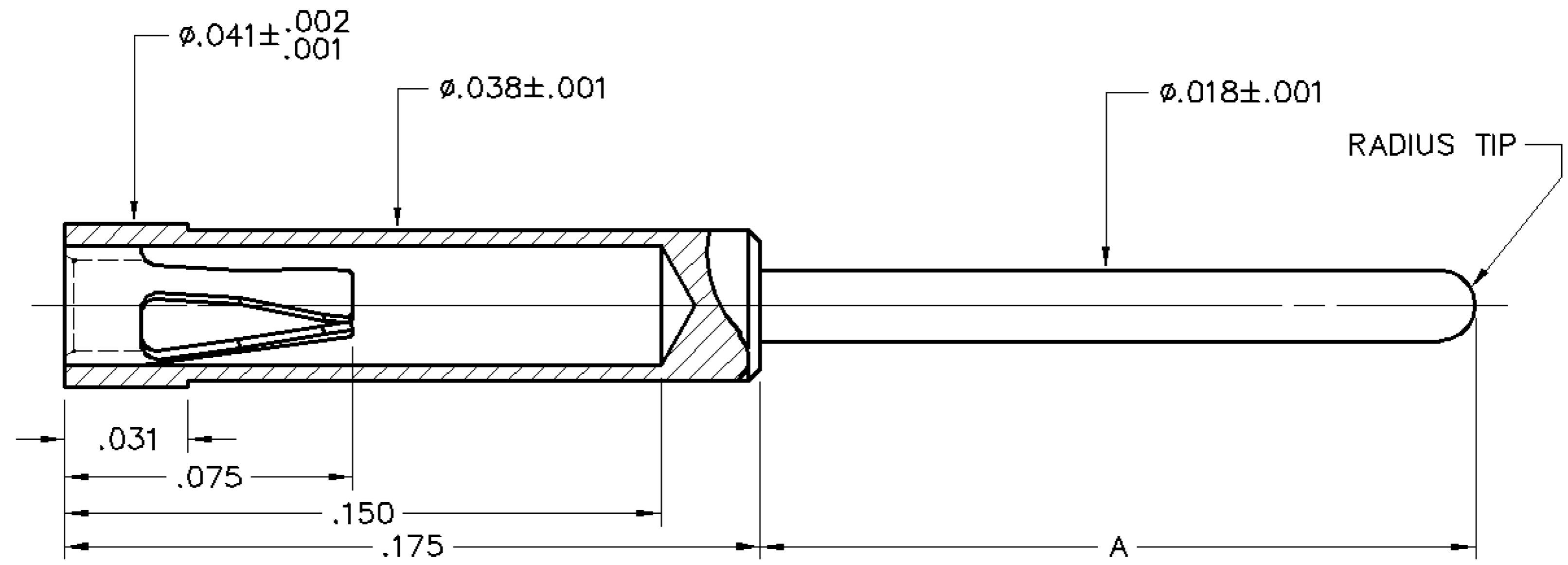


REV.	DESCRIPTION	DATE	INIT.
1	ENG. DWG.	3/23/04	D.W.



CONFIGURATION CHART

DASH NO.	LTH. A ± .005
4008-1	.060
4008-2	.125
4008-3	.180
4008-4	.275
4008-5	.400
4008-6	.440

- NOTES:
1. MATERIAL: BRASS ALLOY TYPE 360, 1/2 HD., PER QQ-B-626.
  2. APPLICABLE PLATING SPECIFICATIONS: GOLD - MIL-G-45204, NICKEL - QQ-N-290, 93/7 BRIGHT TIN LEAD - MIL-P-81728.
  3. FOR USE IN  $\phi.041$  MTG. HOLE
  4. AVAILABLE CONTACT #30, 32, & 61.

5. ORDER CODE: 4008-X -XX

DASH NO. \_\_\_\_\_

BASIC PART NO. \_\_\_\_\_

PLATING \_\_\_\_\_

- 01- 200  $\mu$ " TIN OVER 100  $\mu$ " NICKEL
- 02- 10  $\mu$ " GOLD OVER 100  $\mu$ " NICKEL
- 03- 30  $\mu$ " GOLD OVER 100  $\mu$ " NICKEL
- 04- 50  $\mu$ " GOLD OVER 100  $\mu$ " NICKEL

UNLESS NOTED OTHERWISE: ALL DIMENSIONS ARE IN INCHES	TOLERANCES: .XX ± .01 .XXX ± .005	DRAWN BY D. WEISE	ELPAKCO INC. 2 CARL THOMPSON RD., WESTFORD MA. 01886 (978) 392-0400, FAX (978) 392-6814	
	SCALE 20X	DATE 3/23/04	TITLE PIN RECEPTACLE FOR $\phi.015$ -.021 PINS	PIN OR TERMINAL NO. 4008
				REV 1